

**DOCUMENT CONTROL SUMMARY**

<b>Title of Document</b>	LSESN Pathway for spinal sarcomas, including sacrum and paraspinal tissues
<b>Aims</b>	To agree the pathway for adult patients presenting with suspected or confirmed spinal sarcomas within the London and South-East Sarcoma Network
<b>Issued by</b>	London and South-East Sarcoma Network (LSESN) Sarcoma Advisory Group (SAG)
<b>Circulation To</b>	LSESN SAG: <ul style="list-style-type: none"> <li>• Core members</li> <li>• Trust Sarcoma Leads</li> <li>• Designated Practitioners</li> </ul>
<b>Author/s</b>	Subgroup of LSESN SAG
<b>Date of Version</b>	March 2024
<b>Version Number</b>	2
<b>Approved By</b>	LSESN SAG
<b>Approval Date</b>	22/03/2024 (SAG Meeting)
<b>Outstanding Items</b>	None
<b>Date of Review</b>	March 2026
<b>Storage Pathway</b>	<a href="https://www.lsesn.nhs.uk/sarcoma.html">https://www.lsesn.nhs.uk/sarcoma.html</a>

## LSESN Spinal Sarcoma Pathway, including sacrum and paraspinal tissues

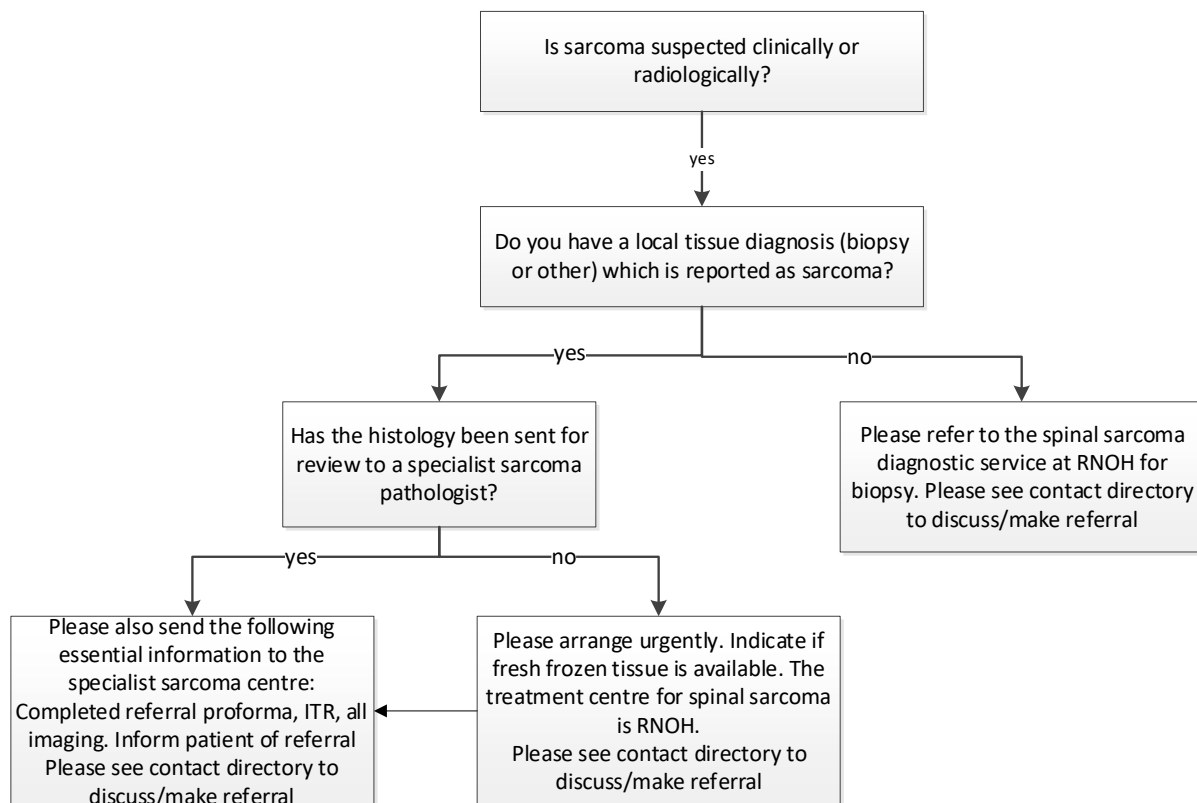
### Introduction

This pathway refers to the care of patients within the London and South East Sarcoma Network with suspected or confirmed sarcomas arising in or involving the spine. The aim of the pathway is to ensure patients receive appropriate and timely care from teams with the appropriate diagnostic and treatment expertise.

### Key messages

- The diagnosis and surgical treatment of patients with suspected or confirmed primary bone tumours is commissioned at specific hospitals in England. RNOH is the commissioned service in the LSS network. Therefore, the default position is that patients with suspected or confirmed primary bone tumours of the spine or sacrum should be referred as soon as possible to RNOH for diagnosis and surgical treatment
- All patients with confirmed bone or soft tissue sarcomas involving the spine or paraspinal tissues must be discussed in the London Sarcoma Service MDT to plan appropriate multidisciplinary care. Discussion should take place before treatment unless clinical urgency means this is not possible. In clinically urgent cases, the treating clinician should discuss the proposed intervention with other appropriate members of the MDT if possible. For example, urgent chemotherapy may avoid the need for urgent spinal cord decompression in some cases.
- Patients with spinal sarcomas can have planned treated at an alternative centre (i.e. NHNN Queens Square) following MDT agreement that it is appropriate to do so.
- Patients with skull base involvement and those requiring transnasal approaches to the craniocervical junction should have surgery at NHNN (Queens Square).
- Surgeons at RNOH and NHNN should be supported to attend either centre for surgery when their expertise would be of benefit to the patient
- Treatment of sarcomas arising in the spine, sacrum and paraspinal tissues with spine contact or involvement will only be undertaken by core members of the sarcoma MDT or by designated practitioners (designation by the LSESN Sarcoma Advisory Group)
- Radiotherapy treatment for primary bone tumours of the spine or sacrum should be given at UCLH

**Guidance for referrers**



**Principles, as defined by the [national sarcoma service specification](#)**

See Section 2.4.2 of the Sarcoma Service Specification. Please note additional documentation for children with spine and paraspinal tumours.

- All people with a suspected or confirmed diagnosis of sarcoma must be referred to a Specialist Sarcoma Centre
- People with suspected sarcomas arising in the spine, sacrum and paraspinal tissues with spine contact or involvement must be referred to a designated bone sarcoma service, which will be a Sarcoma Specialist Centre where spine MDTs and sarcoma MDTs work jointly.
- The principal role of a Sarcoma MDT is to determine a care plan for all people with bone and soft tissue sarcoma and to be responsible for its delivery either by members based at the Specialist Sarcoma Centre or by designated practitioners working at Local Sarcoma Units or by Children/Teenage and Young Adult Principal Treatment Centres following care pathways agreed by the Sarcoma Advisory group
- Pathology for all sarcomas must be reviewed by a Specialist Sarcoma Pathologist for diagnostic confirmation and undertaking any appropriate molecular analysis and genomic testing
- Sarcoma services must be structured and managed to reduce the number of unplanned excisions or excisions undertaken outside a specialist centre
- All resections of sarcomas are undertaken by surgeons who are core or designated members of the Sarcoma MDT. Surgery for bone and soft tissue sarcoma arising in the spine, sacrum and paraspinal tissues with spine contact or involvement must only be carried out by designated practitioners in centres defined by the Sarcoma Advisory Group

**Additional background evidence supporting specialist care**

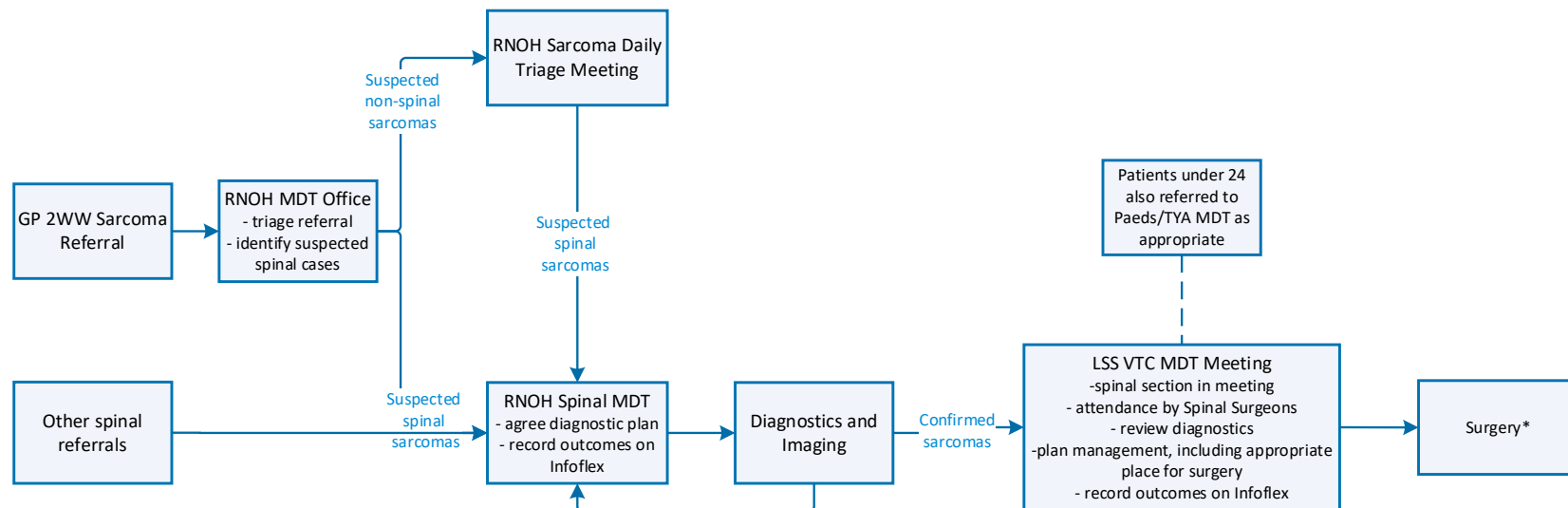
- Presentation to a specialised sarcoma multidisciplinary tumour board is independently correlated with reduction in the risk of relapse<sup>1</sup>
- Surgery in a sarcoma reference centre has been reported to be associated with improved local recurrence free survival, event free survival and overall survival<sup>2</sup>

---

<sup>1</sup> Ann Oncol 2017;28(11):2852-2859

<sup>2</sup> Ann Oncol 2019;30:1143-1153

## London Sarcoma Service Spinal Sarcoma Pathway



\*Surgery at RNOH, unless agreed in the MDT meeting that treatment would be more appropriate elsewhere

### Directory of Key Contacts

To discuss the referral of a primary bone sarcoma please contact:

Contact	Telephone	Email
MDT Office	020 8909 5600/5111/5603	
On Call Spine Consultant (via switchboard)	020 3947 0100	

If the referral is for a child, please see the LSESN Pathway for children with spinal sarcomas.

If a patient has presented as an emergency with a suspected metastatic spinal cord compression, please see the LSESN MSCC Pathway.

### Key RNOH Contacts

Contact	Telephone	Email
Hanny Anwar	07960537124	Hanny.anwar@nhs.net
Nick Hayden	07714321827	nicholashaden@nhs.net
John Afolayan	07985214521	John.afolayan1@nhs.net

### Designated Practitioners

(see Appendix 2 of Sarcoma Service Specification 170122S)

Name	Trust	Speciality	Email
David Choi	UCLH	Surgery	david.choi@nhs.net
Antonino Russo	UCLH	Surgery	antonino.russo@nhs.net
Parag Sayal	UCLH	Surgery	Parag.Sayal@nhs.net

A list of Chemotherapy and Radiotherapy Designated Practitioners and their contact details can be found on the LSESN website <https://www.lsesn.nhs.uk/guidelines.html>