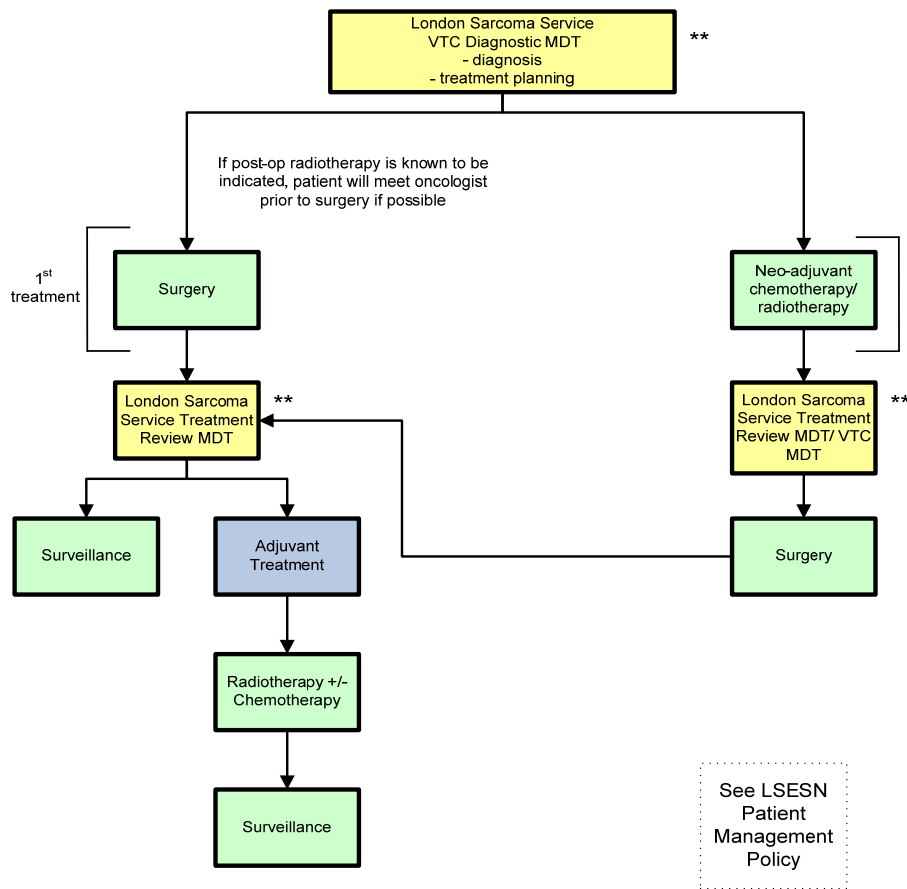


Curative Intent

Treatment with Curative Intent

- All bone patients are treated by The London Sarcoma Service MDT
- The London Sarcoma Service MDT are responsible for all aspects of patients care
- Patients under 24 will also be referred to the Teenage and Young Adult or Paediatric MDTs as appropriate when discussed at the Sarcoma MDT
- Patients will be referred to other teams such as rehabilitation and psychological teams where appropriate, when discussed at the Sarcoma MDT or in Outpatient Clinic



* this pathway applies to bone tumours arising at all sites in all ages

** Note: Cranio-facial bone tumours are also discussed in the UCLH Head & Neck MDT at these points

Key:

MDT discussion

Clinic/Diagnostics/Treatment

Process

Important information